



Tool Rental Center MANUAL



SEC-NG

10" Concrete Grinder



SKU # 59800HD

STARTING SERIAL # 240410420



Read and understand this *Operator's Instruction Manual*,
and the *Engine Manufacturer's Owner's Manual*
before operating this equipment.
Death or serious injury can result if this machine is used improperly.



**SAFETY INFORMATION****SAFETY MESSAGES**

• Safety Instructions are preceded by a graphic alert symbol of DANGER, WARNING, or CAUTION.



Indicates an imminent hazard which, if not avoided, will result in death or serious injury.



Indicates an imminent hazard which, if not avoided, can result in death or serious injury.



Indicates hazards which, if not avoided, could result in serious injury and or damage to the equipment.

GASOLINE / PROPANE POWERED EQUIPMENT

• Engine exhaust from this product contains chemicals known to the State of California to cause cancer, birth defects or other reproductive harm.



• Tilting a gasoline powered machine fitted with an EPA approved vented charcoal filter gas cap, beyond 20° can cause fuel leakage. If a leak occurs, do not start or run the engine until the leak is fixed. Eliminate all other ignition sources in the immediate area (no smoking, flares, sparks or flames). Use approved gasoline absorbing material to contain the fuel leakage. Then use clean, non-sparking tools to collect absorbed materials then dispose of these contaminants properly.



• Gasoline is extremely flammable and poisonous. It should only be dispensed in well ventilated areas, and with a cool engine.

• Small gasoline engines produce high concentrations of carbon monoxide (CO) example: a 5 HP 4 cycle engine operation in an enclosed 100,000 cu. ft. area with only one change of air per hour is capable of providing deadly concentrations of CO in less than fifteen minutes. Five changes of air in the same area will produce noxious fumes in less than 30 minutes. Gasoline powered equipment should not be used in enclosed or partially enclosed areas. Symptoms of CO poisoning include, head-ache, nausea, weakness, dizziness, visual problems and loss of consciousness. If symptoms occur - get into fresh air and seek medical attention immediately.

- Never refuel a hot engine or an engine while it is running.
- Engines are shipped from factory without fuel/oil.



• Propane is extremely flammable and is heavier than air and tends to settle in low areas where a spark or flame could ignite gas. DO NOT start or operate this propane engine in a poorly ventilated area where leaking propane gas could accumulate and endanger safety of persons in area. If headache develops, shut off machine. Have it checked for carbon monoxide emissions by a qualified technician before using it again. To ensure personal safety, installation and repair of propane fuel supply systems must be performed only by qualified technicians. Carbon monoxide emissions from this machine are greatly increased due to a dirty combustion air cleaner.

ELECTRICAL POWERED EQUIPMENT

Extreme care must be taken when operating electric models with water present: Ensure power cord is properly grounded, is attached to a Ground-Fault-Interrupter (GFI) outlet, and is undamaged.

- Check all electrical cables - be sure connections are tight and cable is continuous and in good condition. Be sure cable is correctly rated for both the operating current and voltage of this equipment.
- Improper connection of the equipment grounding conductor can result in a risk of electric shock. Check with qualified electrician or service person if there is any doubt as to whether the outlet is properly grounded. Adhere to all local codes and ordinances.
- NOTE: In the event of a malfunction or breakdown, grounding provides a path of least resistance for the electric current to dissipate. The motor is equipped with a grounded plug and must be connected to an outlet that is properly installed and properly grounded. DO NOT modify the plug provided on the motor. If the plug does not fit the outlet have a qualified electrician install the proper receptacle.

ELECTRICAL POWERED EQUIPMENT CONTINUED

- Do not disconnect power by pulling cord. To disconnect, grasp the plug, not the cord.
- Unplug power cord at the machine when not in use and before servicing.
- Switch motor OFF before disconnecting power.
- Never use frayed, damaged, taped or under rated extension cords. Electrical shock could result in death or serious injury to the operator and damage to the equipment.
- Assure you are using the proper extension cord length.

GENERAL INSTRUCTIONS

- Equipment should only be operated by trained personnel in good physical condition and mental health (not fatigued). The operator and maintenance personnel must be physically able to handle the bulk weight and power of this equipment.
- This is a one person tool. Maintain a safe operating distance to other personnel. It is the operators' responsibility to keep other people (workers, pedestrians, bystanders, etc.) away during operation. Block off the work area in all directions with roping, safety netting, etc. Failure to do so may result in others being injured by flying debris or exposing them to harmful dust and noise.
- This equipment is intended for commercial use only.
- For the operator's safety and the safety of others, always keep all guards in place during operation.
- Never let equipment run unattended.



- Personal Protection Equipment and proper safety attire must be worn when operating this machinery. The operator must wear approved safety equipment appropriate for the job such as hard hat and safety shoes when conditions require. Hearing protection **MUST** be used when operational noise levels of this equipment may exceed 85db. Eye protection **MUST** be worn at all times.



Keep body parts, loose clothing and accessories away from moving parts. Failure to do so could result in dismemberment or death.

- Do not modify the machine.
- Stop motor/engine when adjusting or servicing this equipment. Maintain a safe operating distance from flammable materials. Sparks from the cutting-action of this machine can ignite flammable materials or vapors.

**DUST WARNING**

Some dust created by power sanding, sawing, grinding, drilling, and other construction activities contains chemicals known to cause cancer, birth defects, or other reproductive harm. Materials being removed can be toxic or hazardous. A breathing respirator is required to help protect the operator. Some examples of these chemicals are:

- Lead from lead-based paints.
- Crystalline silica from bricks, concrete and other masonry products. Your risk of exposure to these chemicals varies depending on how often you do this type of work. To reduce your risk: work in a well ventilated area, use a dust control system, such as an industrial-style vacuum, and wear approved personal safety equipment, such as a dust/particle respirator designed to filter out microscopic particles.
- See more on the importance of dust prevention and silica warnings at: osha.gov/silica
- More concrete and silica dust suppression training and educational materials available at edcoinc.com/silica-standards or scan the QR code on page 5.
- Written exposure plans are provided at <http://www.edcoinc.com/written-exposure-control-plans/>



Tool Rental Center Manual



SEC-NG 10" Concrete Grinder

TABLE OF CONTENTS

<u>Section</u>	<u>Page Number</u>
Safety Information	2
How To Order Replacement Parts	3
Machine Safety Symbol Label Reference	4, 5
California Proposition 65 Warning!	6
Dust and Crystalline Silica Warning!	7
Operational Keys to Good Care and Long Life	9
Operating Controls	10
Important Notes	11
Getting Started with your New Grinder	12, 13
Procedure for Lubricating Flange Bearings and Attaching a Vacuum	14
Procedure for Adjusting or Replacing Drive Belt	15
Troubleshooting and Servicing	16
Maintenance Schedule	17
Parts Illustration 1: Main Grouping	18, 19
Parts Illustration 2: Leveling System Grouping	20
Parts Illustration 3: Water Valve & Hose Grouping	21
Parts Illustration 4: 10" Magna-Trap Disc Assembly	22
Parts Illustration 5: Motor & Belt Drive Grouping	24, 25
Switch Wiring Diagram	26
Motor Wiring Diagram	27
Decal Sheet	28
Decals Continued / Notes	29
Limited Equipment Warranty of Sale	31
STOP - Before Using This Product	32

HOW TO ORDER REPLACEMENT PARTS

- ☐ To insure product safety and reliability, always use genuine EDCO replacement parts when making repairs to the equipment.
- ☐ When calling for parts, specify the MODEL and SERIAL number of the machine, which can be found on the NAME PLATE. Keep that information in the space provided. In addition to this information, give part number, description, and quantity as listed on the parts list to your parts representative.
- ☐ Please note: Due to improvements and changes in the equipment, the illustrations shown may be different than the actual machine.

FILL IN INFORMATION BELOW

Date of Purchase _____

Model # _____

Serial # _____

SKU # _____

MACHINE SAFETY SYMBOL LABEL REFERENCE



This symbol means that the guards must remain in place while the engine/motor on the machine is running because death or personal injury may result.
(Yellow background with black pictogram and black outline)



This symbol means that there are moving parts and if feet/fingers/digits are inserted under any edge of the cutter/grinder/saw cover while the engine/motor on the machine is running that personal injury and loss of foot/fingers/digits may result.
(Yellow background with black pictogram and black outline)



This symbol means the surface is HOT and that if fingers/digits/hands or any bare or unprotected skin comes in contact with this surface or hot accessory, possible serious burns and personal injury may result.
(Yellow background with black pictogram and black outline)



This symbol means that potential hazardous voltages are present and the equipment must be properly grounded and extreme caution should be taken. If for any reason maintenance or repair is needed, insure that voltage(s) are disconnected at the machine and the source unless (be cautious) voltage needs to be present to troubleshoot the problem, then only qualified personal should work on "live" systems.
(Yellow background with black pictogram and black outline)



This symbol means that the machine is heavy if the machine needs to be lifted onto or off of a truck, loading dock etc. that proper technique or heavy duty lifting device should be used, personal injury could result.
(Yellow background with black pictogram and black outline)



This symbol means that dangerous chemicals, gases, dust particles and/or fumes are present including carbon monoxide. Proper ventilation must be maintained. Do not use gasoline/diesel/propane powered equipment indoors.
(Yellow background with black pictogram and black outline)



This symbol means that there are sharp components and if feet/fingers/digits come in contact personal injury or death could result.
(Yellow background with black pictogram and black outline)



This symbol means hazardous pressures are present. Caution should be exercised to prevent personal injury or damage to equipment. Face, eye and head protection should be used.
(Yellow background with black pictogram and black outline)



This symbol means explosive and hazardous vapors are present. Caution should be exercised to prevent personal injury to face and eyes. Breathing and personal protection should be used when servicing.
(Yellow background with black pictogram and black outline)

MACHINE SAFETY SYMBOL LABEL REFERENCE



This symbol means that the Operator's, owners, instruction and/or manufacturer(s) manuals must be read and understood before operating or attempting to operate this electrical, gasoline, diesel or propane powered equipment, failure to do so can result in personal injury and possible death. (Blue background with white pictogram.)



This symbol means that proper eye protection must be worn/used during the operation of this equipment. There is a potential risk of operator eye damage, injury or loss of sight. This also applies to any personnel standing nearby observing the operation of this equipment. (Blue background with white pictogram.)



This symbol means that proper ear protection should be worn/used during the operation of this equipment. There is a potential risk of operator hearing damage, injury or loss of hearing which will increase based on the length of exposure. This also applies to any personnel standing nearby observing the operation of this equipment. (Blue background with white pictogram.)



This symbol means that proper head protection should be worn/used during the operation of this equipment there is a potential risk of operator head injury from foreign or loose objects the equipment might come in contact with during operation. This also applies to any personnel standing nearby or observing the operation of this equipment. (Blue background with white pictogram.)



This symbol means that proper breathing protection or engineering controls must be worn/used during the operation of this equipment there is a potential risk of operator lung damage. Repeated and/or substantial inhalation of airborne crystalline silica can cause serious or fatal respiratory diseases, including silicosis. In addition, to California and some other authorities have listed respirable crystalline silica as a substance known to cause cancer. When grinding/cutting/drilling such materials, always follow local respiratory precautions. This also applies to any personnel standing nearby or observing the operation of this equipment. (Blue background with white pictogram.)



This symbol denotes the lifting point and means that if lifting of this equipment is necessary use a lifting device that is designed to accommodate or exceed the weight of this machine. Check the Operator's manual for specifications. Using a device that is not designed to accommodate or exceed the weight of this machine could result in damage to the machine and personal injury. Do not lift equipment over people because death or serious injury could result. (Blue background with white pictogram.)



This symbol means do not insert fingers/digits under any edge of the belt cover while the engine/motor on the machine is running because personal injury and loss of fingers/digits may result. (Black pictogram with red "No" symbol outline)



This GHS pictogram identifies that the chemicals contained present serious health hazards. (Black pictogram with red diamond symbol outline)

WARNING: California Proposition 65

Proposition 65 applies to any company operating in California, selling products in California, or manufacturing products that may be sold in or brought into California. The purpose of Proposition 65 is to inform the public about exposure to these chemicals. EDCO has not shifted manufacturing processes, this is strictly an updated warning procedure required by the state of California. While the exposure from EDCO products may be negligible or well within the “*no significant risk*” range, out of an abundance of caution, EDCO has elected to provide these Proposition 65 warnings.

Depending on machine/part model the following warnings may apply:



WARNING: Cancer and Reproductive Harm -
For more information go to: www.P65Warnings.ca.gov



WARNING: Batteries, battery posts, terminals and related accessories can expose you to chemicals including lead and lead compounds, and other chemicals known to the State of California to cause cancer and birth defects or other reproductive harm. WASH HANDS AFTER HANDLING. For more information go to www.P65Warnings.ca.gov



WARNING: This product can expose you to chemicals including soots, tars, and mineral oils, which are known to the State of California to cause cancer, and carbon monoxide, which is known to the State of California to cause birth defects or other reproductive harm. For more information go to www.P65Warnings.ca.gov



WARNING: This machine used in its application on concrete/cement/brick surfaces can expose you to chemicals including crystalline silica which is known to the State of California to cause cancer. For more information go to www.P65Warnings.ca.gov

For more information regarding exposure to California’s Proposition 65 listed chemicals from an EDCO machine or part, please contact techsupport@edcoinc.com.



DUST AND CRYSTALLINE SILICA WARNING



Grinding/cutting/drilling of masonry, concrete, metal and other materials can generate dust, mists and fumes containing chemicals known to cause serious or fatal injury or illness, such as respiratory disease, cancer, birth defects or other reproductive harm. If you are unfamiliar with the risks associated with the particular process and/or material being cut or the composition of the tool being used, review the material safety data sheets and/or consult your employer, the manufacturers/suppliers, governmental agencies such as OSHA and NIOSH and other sources on hazardous materials. California and some other authorities, for instance, have published lists of substances known to cause cancer, reproductive toxicity, or other harmful effects.

Control dust, mist and fumes at the source where possible. In this regard use good work practices and follow the recommendations of the manufacturers/suppliers, OSHA/NIOSH, and occupational and trade associations. Water should be used for dust suppression when wet grinding/cutting/drilling is feasible. When the hazards from inhalation of dust, mists and fumes cannot be eliminated, the operator and any bystanders should always wear a respirator approved by NIOSH/MSHA for the material being used.



Grinding/cutting/drilling of masonry, concrete and other materials with silica in their composition may give off dust or mists containing crystalline silica. Silica is a basic component of sand, quartz, brick clay, granite and numerous other minerals and rocks. Repeated and/or substantial inhalation of airborne crystalline silica can cause serious or fatal respiratory diseases, including silicosis. In addition, California and some other authorities have listed respirable crystalline silica as a substance known to cause cancer. When grinding/cutting/drilling such materials, always follow the respiratory precautions mentioned above.

See more on the importance of dust prevention and silica warnings at osha.gov/silica.

See more concrete and silica dust suppression training and educational materials at edcoinc.com/silica-standards or scan the QR code at right.



THIS PAGE LEFT BLANK INTENTIONALLY



MODEL SEC-HD 10" Concrete Grinder

Operational Keys to good machine care and long life...

1. Before each use, check and insure all hardware, nuts, bolts and fittings are tight and not worn or damaged. If damaged or missing hardware is noted, it should be replaced before the machine is put back into service.
2. If using attachments such as a vacuum for dust control, insure filters are clean and the vacuum is empty before each use and empty often for best vacuum performance. Check hoses, gaskets, seals and filters for damage. If any damage is found the part or parts should be replaced. Dirty or damaged filters and leaking gaskets or seals will cause poor vacuum performance, penetrate and shorten the life of any motor and cause uncontrollable dust which is hazardous to ones health.
3. Check the maintenance schedule for important information about lubrication intervals. Remember, machines used in a dusty environment have a more frequent lubrication requirement than a machine that is not used in a dusty environment.
4. Machines that have electric motors should be checked for proper voltage settings by checking the name plate on the motor for the different electrical configurations i.e.: single phase, three phase and the voltage settings available. This is not required on single voltage motors i.e.: 120 Volt Single Phase. The power cords and/or extension cords should be checked for proper length and gauge, remember, the longer the cord a heavier gauge wire is required. Too small a gauge wire causes a voltage drop which in turn causes motor overheating and damage. Check all wiring for cuts, bare or exposed wire and damaged connectors or plugs. These items can cause fatal shocks under the right conditions. It is current that kills, not voltage.
5. After each days use, the machine should be cleaned. When cleaning electric powered machines, cover any openings to prevent contaminants from entering the motor.

OPERATING CONTROLS



IMPORTANT NOTES

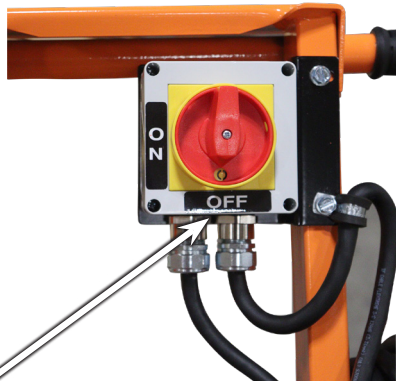
NOTE:

This is the lifting bail for this machine.



NOTE:

Motor overload reset on bottom of box.



NOTE:

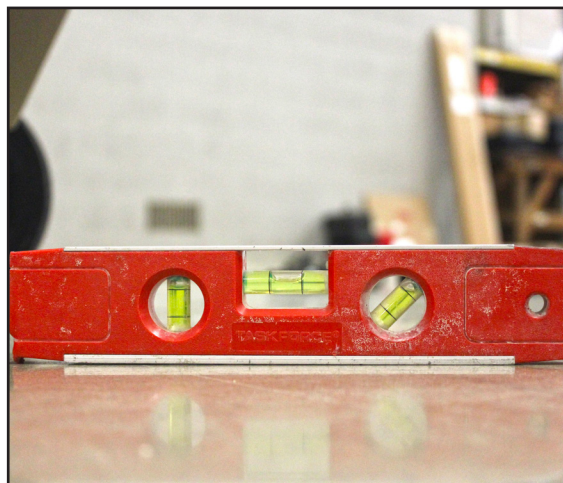
If overload protection on motor trips make sure this switch is in the off position and power cord is disconnected from power source before resetting.

NOTE:

Adjust dust skirt so there is 1/8" gap with work surface before use.

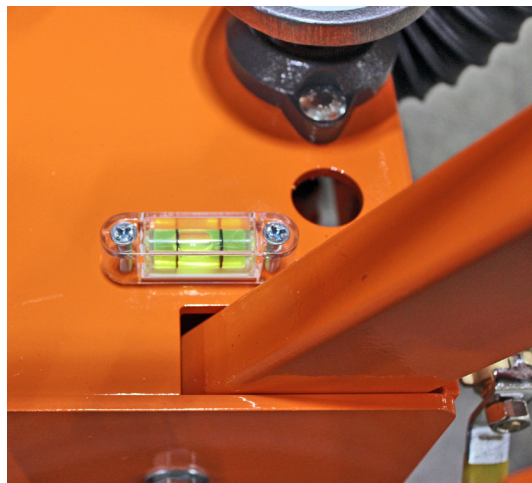


Getting Started with your New Grinder



BEGIN THE LEVELING PROCESS:

Check level of the floor.



BEGIN THE LEVELING PROCESS:

Lower machine to surface and match level. Adjust height by turning leveling handle in the rear.



BEGIN THE LEVELING PROCESS:

When leveling do not continue to turn handle past the level mark. Continued turning will disengage lower linkage from all thread.



BEGIN THE LEVELING PROCESS:

Replace the skirt leaving approximately 1/8" clearance above the floor.

Getting Started with your New Grinder



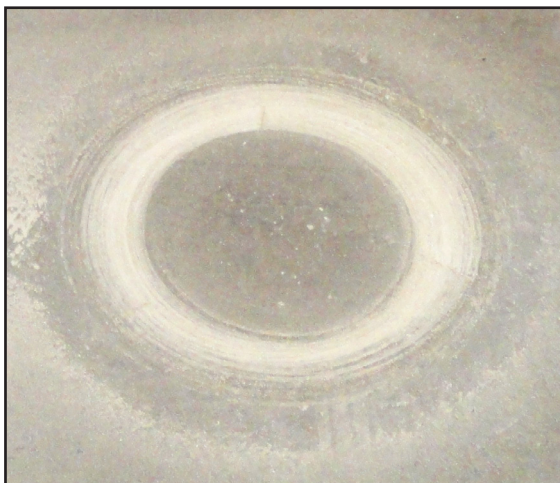
LEVELING:

Lean back slightly on the handle to get the tools off the surface and start the machine. Lower the machine to the surface and do a short touch pass on the concrete.



LEVELING:

The bubble on the machine will not necessarily be centered once optimum operating position is achieved. It will also float back and forth during operation.



LEVELING:

This is the outcome of a level machine.



LEVELING:

This is the outcome of a non-level machine.

PROCEDURE FOR LUBRICATING FLANGE BEARINGS



To grease the flange bearings attach the grease gun to the grease fittings as shown in the above photos and give only two (2) pumps on the grease gun weekly. If excessive over lubrication is done grease will leak onto the work surface causing possible damage and wasted cleanup time.

PROCEDURE FOR ATTACHING A VACUUM



If using a vacuum for dust control attach it to the vacuum port located on the rear of the handle securing it as shown in photo above.



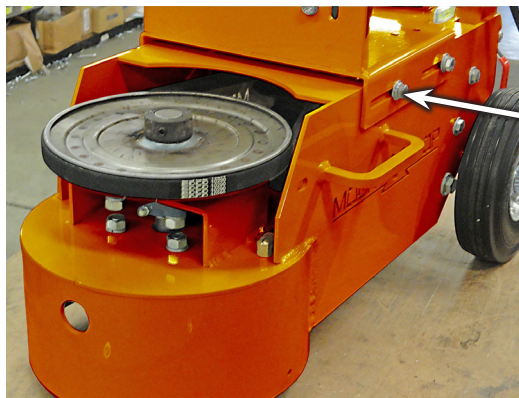
PROCEDURE FOR ADJUSTING OR REPLACING DRIVE BELT



To adjust the drive belt loosen four (4) bolts securing the motor mount to the frame.

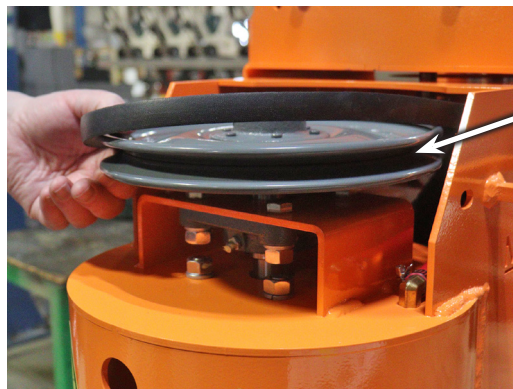
Slide the motor mount to the rear of the machine to increase belt tension.

Tighten the four (4) bolts loosened earlier maintaining pressure on the motor mount to prevent loosening.



To replace the belt, remove the hood by removing two (2) bolts, one on each side of the machine.

Loosen the four (4) bolts as in the first step and slide the motor mount all the way forward.



Remove the belt from the motor and driven shaft sheaves as shown in the photo on the left.



Reverse the previous step to install new belt. Slide motor mount towards the rear of the machine and adjust belt tension, tighten all four (4) bolts as explained above. Replace hood and tighten bolts.

NOTE:

While cover is removed check to see if there are any remnants of grease from servicing on any of the surfaces, remove and dispose of properly.

TROUBLESHOOTING AND SERVICING

The Grinder and Other System Components:

On any concrete surface preparation equipment there are numerous components that could be the root cause of any type of problem. Therefore take time to analyze any problem that might arise, a little thought and patience can save many hours of down time and frustration.

It is simply a mechanical device designed to efficiently remove trowel marks, rain spots, excess concrete, rough finishes or high spots. Remove 1/32" (1mm) of material per pass.

If the machine is forced into the work surface it can cause unnecessary vibration and noise. The expected results will not be attained.

As with any mechanical equipment, an ounce of prevention is worth a pound of cure. You can prevent most problems and need for repair with routine preventative maintenance. Much like maintaining your automobile, many preventative measures are simple visual checks of oil, filters, lubrication points, loose hardware and leaks.

Seals around the skirt assembly are provided for dust control, worn, broken or maladjusted seals will not provide this control.

Guards are provided for personal as well as machine safety and protection. They are intended to be in place at all times during storage, turn around, operation and only removed for servicing. Foreign objects could fall into the works of the machine unnoticed and cause personal injury and damage when the machine is turned on.

Most parts of the machine cannot be seen from the outside. For a complete breakdown of the machine, any single component or troubleshooting refer to the following pages for detailed information.

System Checklist:

Begin with this simple checklist:

1. Is the source power what it should be or is the voltage too high, too low or nonexistent?
2. Is the drive system loose or worn?
3. Are the insert mounted firmly on the disc?
4. Are any of the insert missing or damaged and all of the same type.
5. Are the lubrication points lubricated properly?
6. Is all the hardware tight?
7. Are the inserts wearing evenly?

Common Problems:

If you have checked these items and a problem still exists, you should analyze the nature of the problem and the possible causes. While we will not cover all of the possibilities, these are the most common problems and their probable causes.

Excessive Noise:

Excessive noise is most often caused by loose components of the machine to include bolts or any adjustable function that is not tightened after adjustment is made.

Excessive Vibration:

Vibration can be caused by a loose motor mount, out of balance grinding disc or missing and worn inserts. Motor and drive shaft sheaves out of alignment.

Leaking Lubricants:

Leaking lubricants can be caused by over heating, worn or bad bearings and over lubrication.

Loss of Power:

A loss of power can be caused by over tightened belts, low voltage, defective wiring or pushing the machine into the work to forcefully and/or adding too much weight to the machine.

Poor Grinding or Cutting:

Worn or missing inserts. Mixed inserts on the same disc. Wrong insert for the type of surface you are working on or the type of material you are trying to remove. Is the right machine being used for the job?

Maintenance Schedule



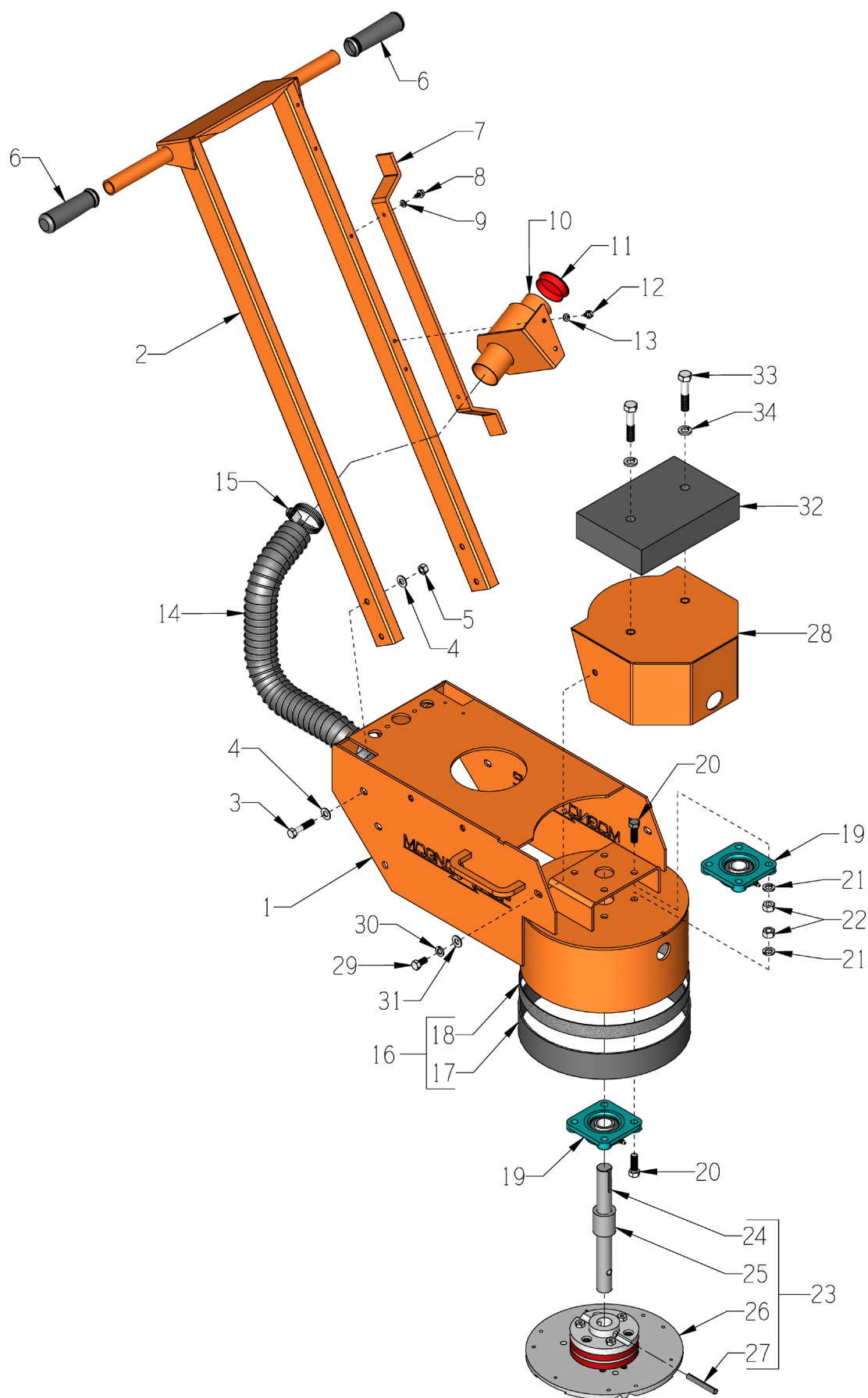
Repairs are to be done by authorized EDCO Dealers only.



Read and follow instructions in the motor owner's manual.

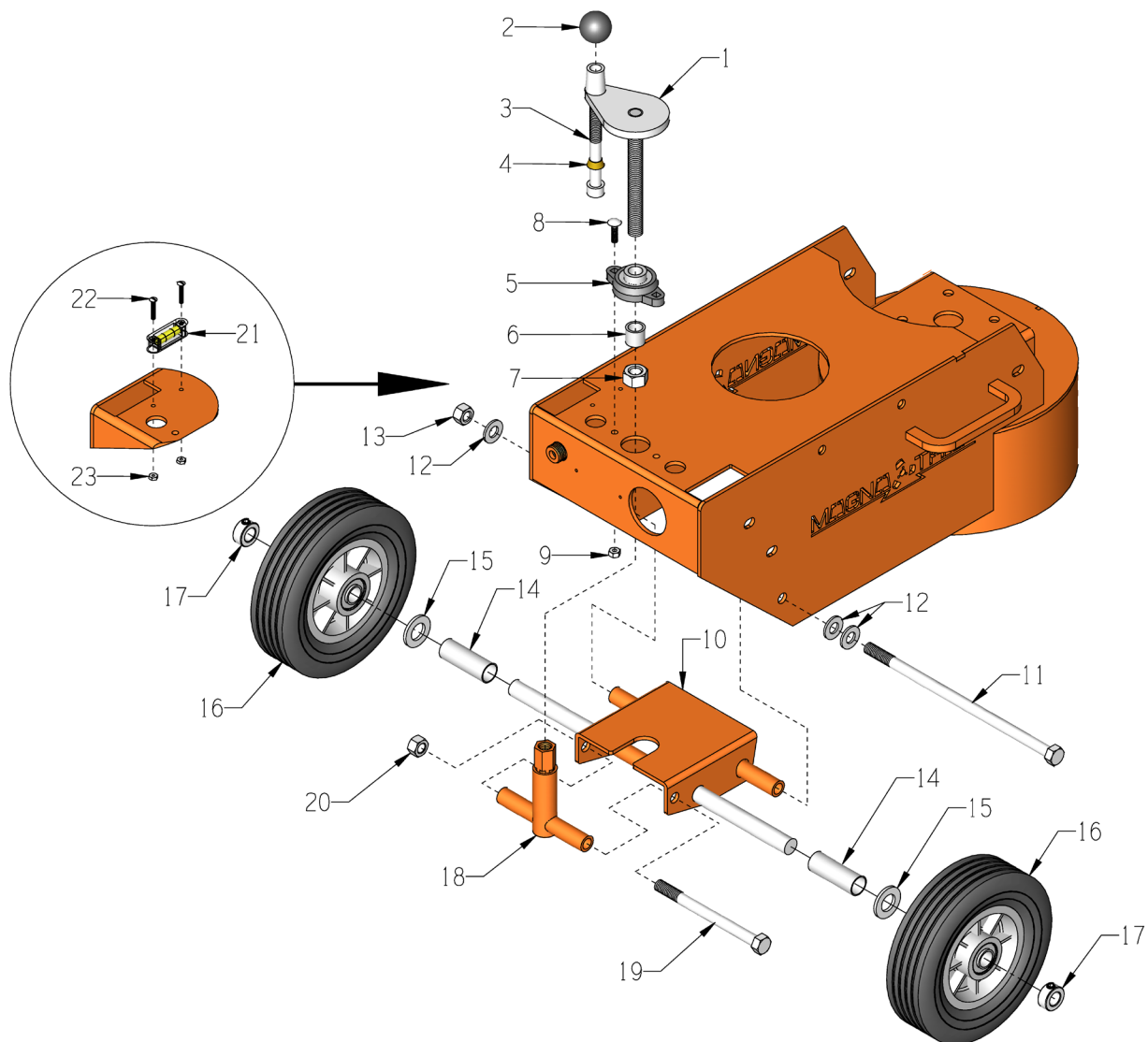
All maintenance to be performed by qualified personnel.	Before Operation	Daily	Every 50 Hours of Operation	As Required	Every Disc Change
Visual Inspection of Entire Machine	X				
Check accessories for uneven wear	X				
Grease Flange Bearings			X		
Clean Dust & Dirt Off Machine		X			
Belt Tensioning				X	
Check Disc Shaft and bearings					X
Replace Disc				X	

ILLUSTRATION 1: MAIN GROUPING



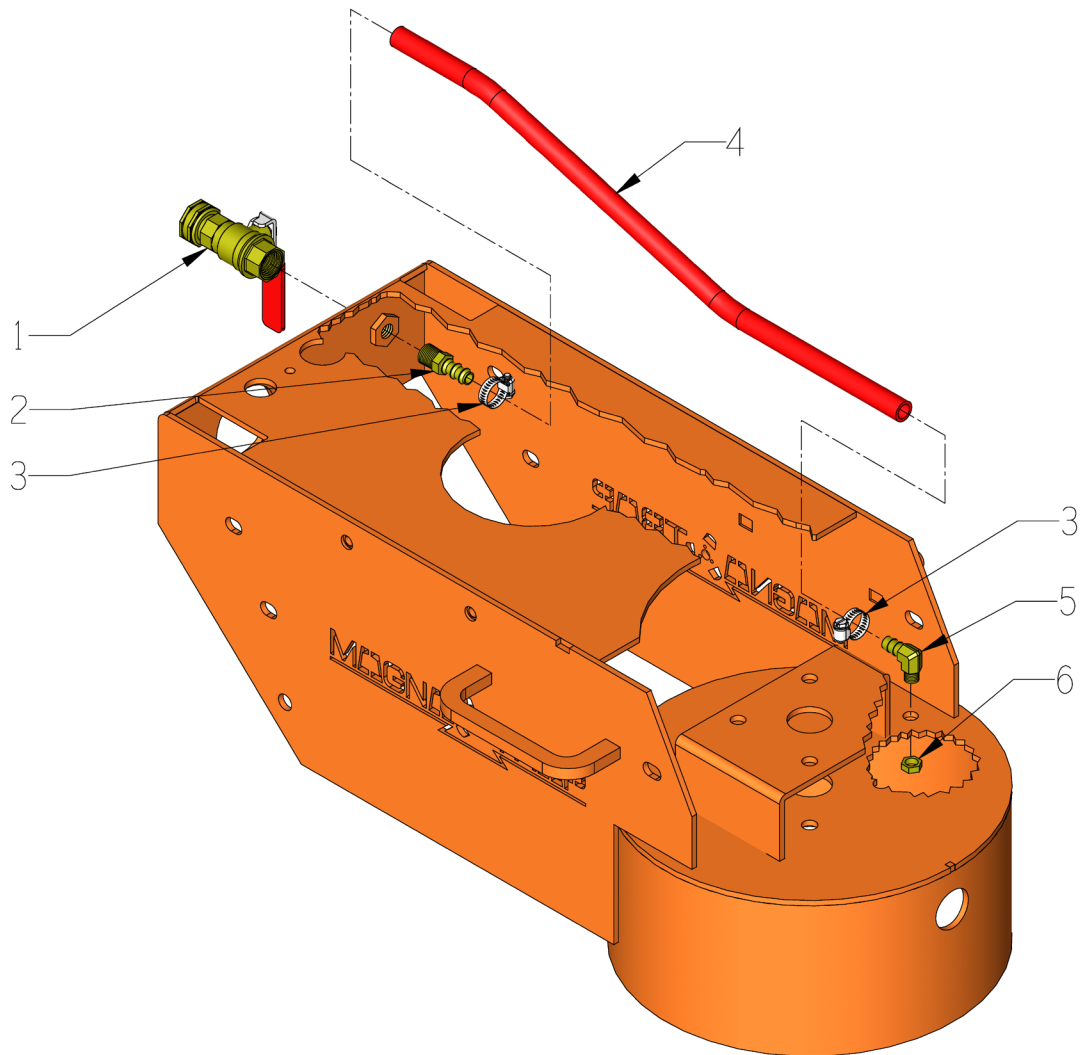
PARTS LISTING - ILLUSTRATION 1: MAIN GROUPING			
ITEM #	PART #	DESCRIPTION	QTY.
1	86901HD	MAIN FRAME, SEC-HD	1
2	86304SHD	HANDLE BAR, SEC-HD	1
3	10029	SCREW, CAP 3/8-24 X 1-3/4	4
4	10025	WASHER, FLAT 3/8 SAE ZINC	8
5	10058	NUT, HEX LOCK 3/8-24 W/ NYLON PATCH	4
6	10608	GRIP, HAND 1" MODEL AT	2
7	86419HD	HOLDER, POWER CORD	1
8	10846	SCREW, CAP STSHW 1/4-20 X 1/2	2
9	10038	WASHER, LOCK 1/4 ZINC	2
10	86347HD	BRACKET, MULTI-VAC PORT 2-3"	1
11	65021	CAP/PLUG 2" RED PLASTIC, FLANGED	1
12	10846	SCREW, CAP STSHW 1/4-20 X 5/8	2
13	10038	WASHER, LOCK 1/4 ZINC	2
14	77113	HOSE, FLEX 2"ID X 32"L	1
15	10766	CLAMP, HOSE, SAE #32, ADJ. TO 2-1/2	2
16	86426K	RUBBER SKIRT W/ VELCRO LOOP & HOOK (INCLUDES ITEMS 17 & 18 TOGETHER)	1
17	86426	RUBBER SKIRT W/ VELCRO-LOOP 39-1/8" (NOTE: CUT TO 36")	1
18	86427	VELCRO-HOOK ONLY, 1" X 39" (TRIMMED TO SIZE) NOTE: THIS PIECE IS PLACED AROUND THE BOTTOM EDGE OF THE SHROUD. USE CONTACT CEMENT.	1
19	77008	BEARING, BALL 1" 4-HOLE FLANGE, ND	2
20	10003	SCREW, CAP 7/16-20 X 1-1/4 ZINC	8
21	10450	WASHER, LOCK 7/16 ZINC	8
22	10481	NUT, HEX 7/16-20 ZINC	8
23	100220	HEAD ASSY., SEC-NG W/ LEV. SYSTEM (INCLUDES ITEMS 24 THRU 27)	1
24	100051	SHAFT 1"DIA. X 9-11/16"L, SEC-NG/HD	1
25	100052	SPACER, HEAD, 1-5/8"L, SEC-NG/HD	1
26	100053	10" MAGNA-TRAP DISC ASSY. W/ HUB (REFER TO ILLUS. 4 FOR BREAKDOWN)	1
27	10007	PIN, ROLL 3/8 X 2-1/2	1
28	86906HD	HOOD, SEC-HD	1
29	10907	SCREW, CAP 3/8-16 X 3/4	2
30	10811	WASHER, LOCK 3/8 ZINC	2
31	10025	WASHER, FLAT 3/8 SAE ZINC	2
32	86345	WEIGHT BLOCK, 30 LB., SEC & TG10-5B	1
33	10323	SCREW, CAP 1/2-13 X 2-1/2	2
34	10045	WASHER, LOCK 1/2 ZINC	2

ILLUSTRATION 2: LEVELING SYSTEM GROUPING



ITEM #	PART #	DESCRIPTION	QTY.	ITEM #	PART #	DESCRIPTION	QTY.
1	86905	KNOB, WHEEL HEIGHT CONTROL	1	13	10407	NUT, HEX LOCK 1/2-13 ZINC	1
2	14023	KNOB, BALL 1-3/8 W/ 1/2-13THD,	1	14	86705	WHEEL SPACER, SECNG TG10	2
3	10411	SCREW, SKT. HD. CAP 1/2-13 X 4	1	15	10009	WASHER, FLAT 3/4 SAE ZINC	2
4	50550	SLEEVE, BRASS 1/2" TAPERED	1	16	79013	WHEEL, 8 X 2-1/2 X 3/4"BRG.POLY HUB	2
5	80009	BEARING, BALL 5/8" 2-HOLE	1	17	10428	COLLAR, LOCKING 3/4"ID	2
6	55010	SPACER, HANDWHEEL, 3/4"L	1	18	86904HD	FORK LINKAGE WELDMENT	1
7	10046	NUT, HEX 5/8-11 ZINC	1	19	10329	SCREW, CAP 1/2-20 X 6	1
8	10412	BOLT, CARRIAGE 1/4-20 X 1	2	20	10205	NUT, HEX LOCK 1/2-20 ZINC	1
9	10861	NUT, KEPS LOCK 1/4-20 ZINC	2	21	59117	LEVEL, SCREW ON	1
10	86702HD	FORK WELDMENT, SECNG TG10	1	22	11871	SCREW, MACHINE FHP 8-32 X 1-1/4	2
11	10355	SCREW, CAP 1/2-13 X 11	1	23	10462	NUT, KEPS LOCK 8-32 ZINC	2
12	10312	WASHER, FLAT 1/2 SAE ZINC	3				

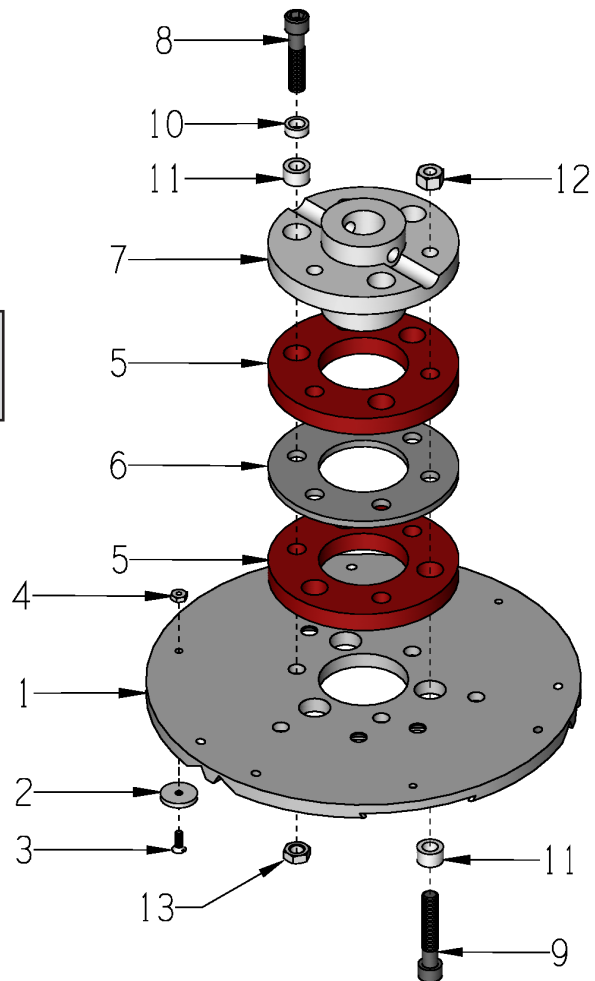
ILLUSTRATION 3: WATER VALVE & HOSE GROUPING



ITEM #	PART #	DESCRIPTION	QTY.
1	10711A	VALVE & HOSE CONNECTOR ASSY.	1
2	50075	BARB, 3/8 HOSE X 1/4MPT (BRASS)	1
3	10714	CLAMP, HOSE, SAE #4, ADJ. TO 5/8"	2
4	86424	HOSE 3/8"ID X 20"L, SEC	1
5	11562	BARB ELBOW 90, 3/8HOSE X 1/8MPT	1
6	10864	NUT, HEX PANEL 1/8-27 NPSM ZINC	1

**ILLUSTRATION 4:
10" MAGNA-TRAP® DISC ASSEMBLY**

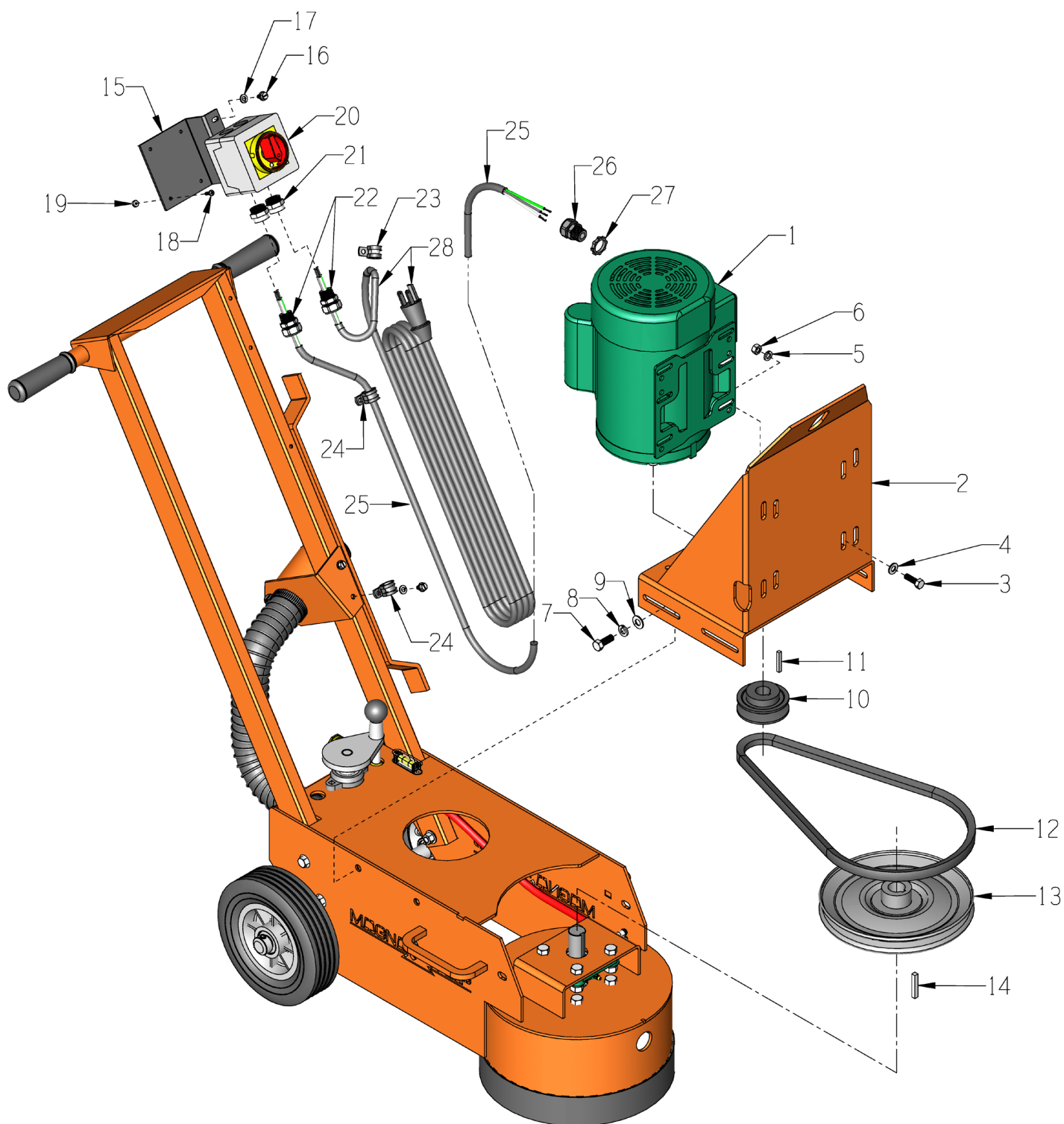
PART # 100053



ITEM #	PART #	DESCRIPTION	QTY.
1-13	100053	10" MAGNA-TRAP DISC ASSY. W/ HUB (INCLUDES ALL ITEMS 1 THRU 13)	1
1	100054	10" UNIVERSAL MAGNA-TRAP DISC ONLY (INCLUDES ITEM 2)	1
2	36064	MAGNET, NEODYMIUM RING 7/8 X 1/8 (REPLACEMENT - USE HARDWARE)	3
3	10647	SCREW, FLAT HD PHILLIPS 8-32 X 1/2	3
4	10462	NUT, KEPS LOCK 8-32 ZINC	3
5	100055	RING, RUBBER, 4-1/2"OD X 1/2"THK	2
6	100056	HUB CARRIER RING, GRINDER	1
7	100057	HUB, GRINDER DISC	1
8	10354	SCREW, SKT. HD. CAP 3/8-24 X 1-3/4	3
9	10012	SCREW, SKT. HD. CAP 3/8-24 X 2	3
10	10113	SPACER, STEEL 9/16OD X 3/8ID X 7/32	3
11	10011	SPACER, STEEL 5/8OD X 3/8ID X 3/8T	6
12	10014	NUT, HEX 3/8-24 ZINC (USE RED LOCTITE)	3
13	11725	NUT, HEX JAM 3/8-24 ZINC (USE RED LOCTITE)	3

THIS PAGE LEFT BLANK INTENTIONALLY

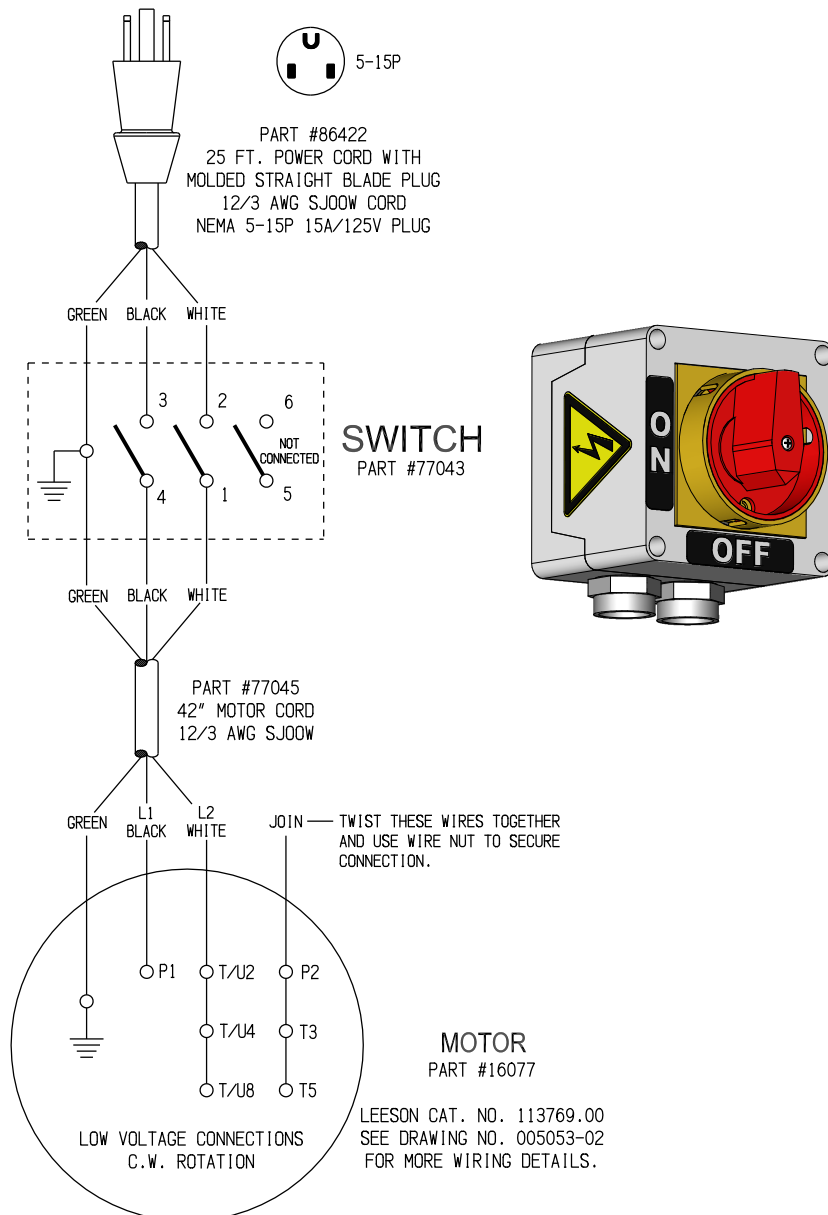
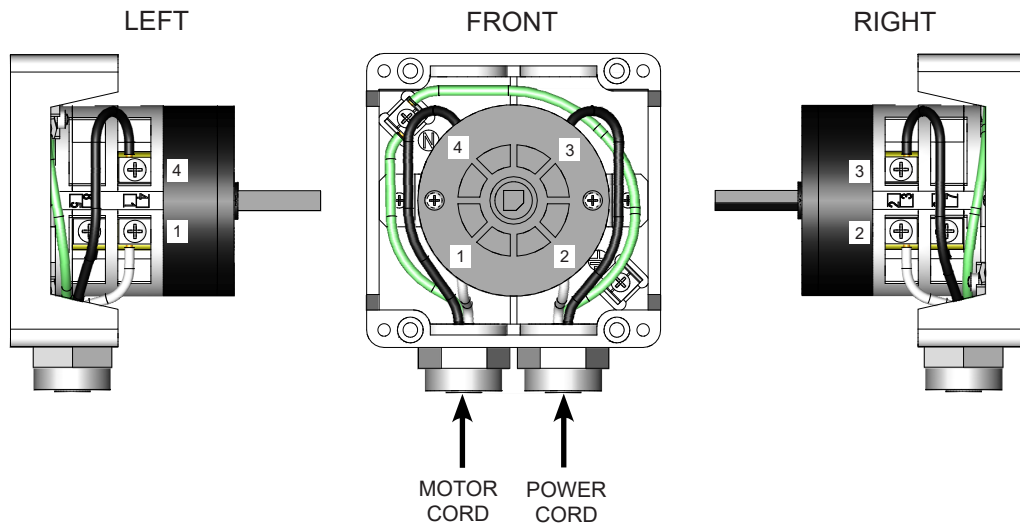
ILLUSTRATION 5: MOTOR & BELT DRIVE GROUPING



PARTS LISTING - ILLUSTRATION 5: MOTOR & BELT DRIVE GROUPING

ITEM #	PART #	DESCRIPTION	QTY.
1	16077	MOTOR, 1.5HP-1PH-60HZ-1725RPM-115/230V-13/6.5A LEESON CAT. NO. 113769.00 WATT-SAVER <u>REPLACEMENT PARTS:</u>	1
	16178.....CAPACITOR, START, LEESON 003025.15 (500MFD 125V)	1
	16174.....CAPACITOR, RUN, LEESON 003014.80 (50MFD 240V)	1
	16179.....RESET BUTTON, LEESON 300033.02 (CED2705)	1
2	86404HD	MOUNT, MOTOR, SEC TG10 TMC7	1
3	10806	SCREW, CAP 5/16-18 X 1	4
4	10213	WASHER, FLAT 5/16 SAE ZINC	4
5	10801	WASHER, LOCK 5/16 ZINC	4
6	10054	NUT, HEX 5/16-18 ZINC	4
7	10055	SCREW, CAP 3/8-16 X 1	4
8	10811	WASHER, LOCK 3/8 ZINC	4
9	10025	WASHER, FLAT 3/8 SAE ZINC	4
10	3613	SHEAVE 3"OD X 1GR.B X 5/8"BORE	1
11	N/A	KEY 3/16"SQ. X 1-3/8 (INCLUDED W/ MOTOR)	1
12	10290	BELT B-35	1
13	86009	SHEAVE 9" OD X 1GR.B X 1" BORE	1
14	40317	KEY 1/4SQ X 1-5/8	1
15	77042	BRACKET, ROTARY CAM SWITCH	1
16	10846	SCREW, CAP STSHW 1/4-20 X 1/2	2
17	10038	WASHER, LOCK 1/4 ZINC	2
18	11663	SCREW, MACHINE 8-32 X 1/2 RHCD ZINC	4
19	10462	NUT, KEPS LOCK 8-32 ZINC	4
20	77043	SWITCH, ROTARY CAM ON/OFF <u>REPLACEMENT PARTS:</u>	1
	77043-2.....SWITCH HANDLE, PADLOCKABLE, LOVATO	1
	77043-4.....GASKET RING, OPERATOR, LOVATO	1
21	77043-1	SWITCH ADAPTER, PG16 TO 1/2"NPT	2
22	40066	STRAIN RELIEF 1/2NPT X .350-.450"	2
23	11690	CLAMP, LOOM, 3/8"	1
24	11565	CLAMP, LOOM, 5/8" (SAE SIZE 10)	2
25	77045	WIRE HARNESS 12/3 X 42"LOA	1
26	16176	STRAIN RELIEF 3/4NPT X .350-.450"	1
27	10740	CONDUIT LOCK NUT 3/4 NP (LOCATED INSIDE JUNCTION BOX)	1
28	86422	CORD W/ PLUG, 25FT. POWER	1

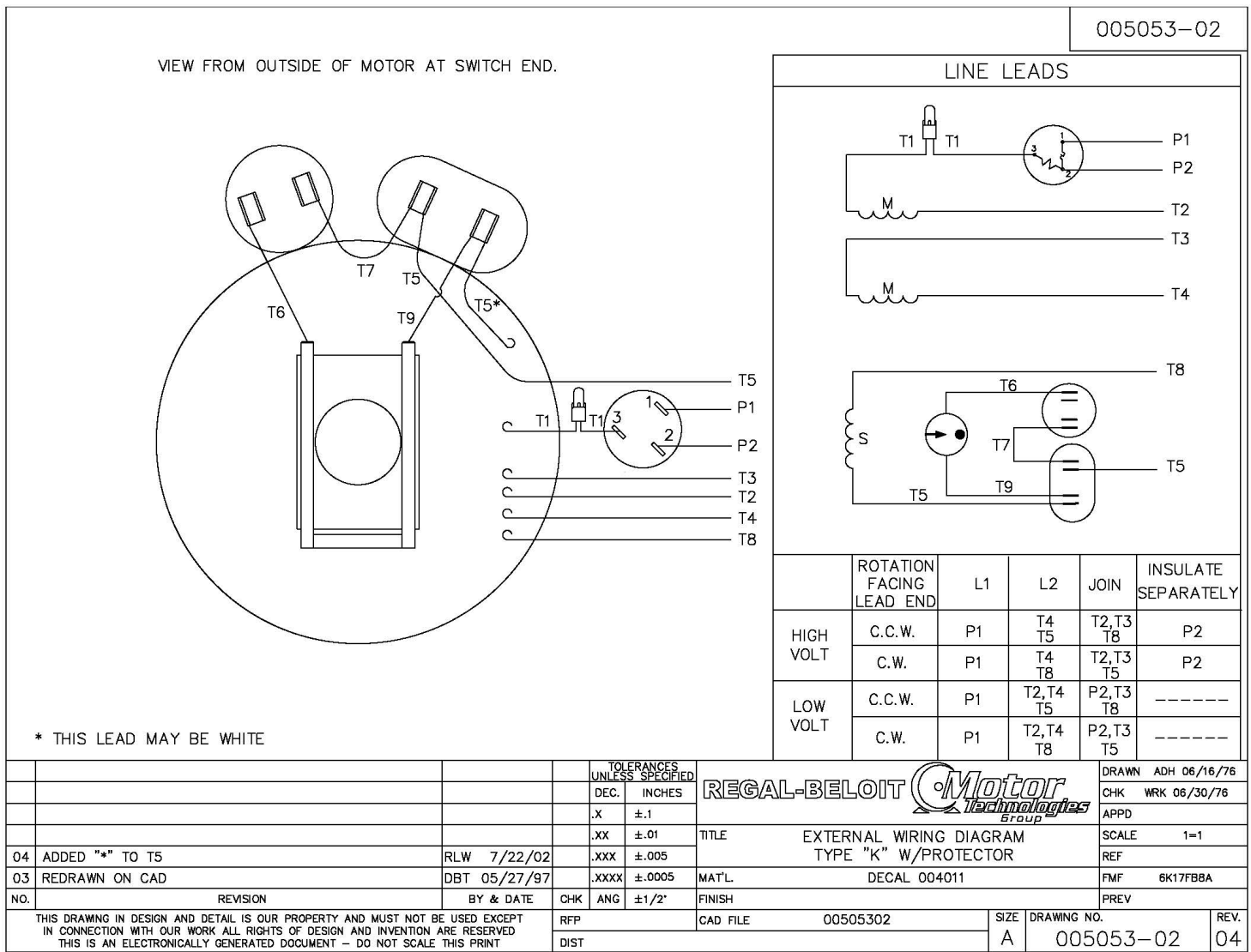
SWITCH WIRING DIAGRAM



MOTOR WIRING DIAGRAM

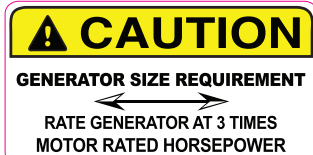
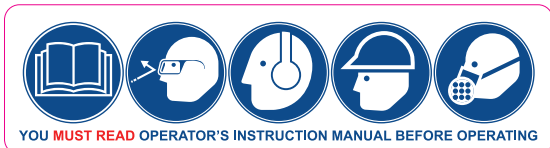
LEESON CAT. NO. 113769.00
1.5HP 60Hz SINGLE PHASE

USE CONNECTIONS FOR CLOCK-WISE (C.W.) ROTATION SHOWN BELOW IN CHART
POWER CORD: BLACK WIRE - L1, WHITE WIRE - L2, GREEN WIRE - GROUND
LOW VOLT (115V) STANDARD, HIGH VOLT (230V) OPTIONAL

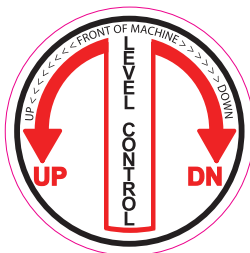


DECAL SHEET

P/N 92211 Rev.G SEC-NG 14 x 17



For OSHA Silica Compliance use with EDCO Vacuum



SWITCH & MOTOR

115 VOLTS

SINGLE PHASE

220 VOLTS





RENTAL

 homedepot.com/rentals

©2013 HDPE

Record here any repairs or changes made to the Equipment

THIS PAGE LEFT BLANK INTENTIONALLY

LIMITED EQUIPMENT WARRANTY OF SALE

Equipment Development Company, Inc. herein referred to as EDCO (Seller) warrants that each new unit manufactured by EDCO to be free from defects in material and workmanship in normal use and service for a period of (1) one year (except for the cutter drum assembly on all model concrete/asphalt planers AND the chisel head assembly on all model ALR's & ALR-BS in which case the warranty period shall be 90 days) from date of shipment to the original retail or equipment rental center owner.

Accessories or equipment furnished and installed on the product by EDCO but manufactured by others, including, but not limited to engines, motors, electrical components, transmissions etc., shall carry the accessory manufacturers own warranty.

EDCO will, at its option, repair or replace, at the EDCO factory or at a point designated by EDCO, any part which shall appear to the satisfaction of EDCO inspection to have been defective in material or workmanship.

EDCO reserves the right to modify, alter and improve any part or parts without incurring any obligation to replace any part or parts previously sold without such modified, altered or improved part or parts.

This warranty is in lieu of and excludes all other warranties, expressed, implied, statutory, or otherwise created under applicable law including, but not limited to the warranty of merchantability and the warranty of fitness for a particular purpose in no event shall seller or the manufacturer of the product be liable for special, incidental, or consequential damages, including loss of profits, whether or not caused by or resulting from the negligence of seller and/or the manufacturer of the product unless specifically provided herein. In addition, this warranty shall not apply to any products or portions thereof which have been subjected to abuse, misuse, improper installation, maintenance, or operation, electrical failure or abnormal conditions and to products which have been tampered with, altered, modified, repaired, reworked by anyone not approved by seller or used in any manner inconsistent with the provisions of the above or any instructions or specifications provided with or for the product.

TERMS AND CONDITIONS

(NOT APPLICABLE TO SALES THROUGH AUTHORIZED DISTRIBUTION)

FORCE MAJEURE

Seller's obligation hereunder are subject to, and Seller shall not be held responsible for, any delay or failure to make delivery of all or any part of the Product due to labor difficulties, fires, casualties, accidents, acts of the elements, acts of God, transportation difficulties, delays by a common carrier, inability to obtain Product, materials or components or qualified labor sufficient to timely perform part of or all of the obligations contained in these terms and conditions, governmental regulations or actions, strikes, damage to or destruction in whole or part of manufacturing plant, riots, terrorist attacks or incidents, civil commotions, warlike conditions, flood, tidal waves, typhoon, hurricane, earthquake, lightning, explosion or any other causes, contingencies or circumstances within or without the United States not subject to the Seller's control which prevent or hinder the manufacture or delivery of the Products or make the fulfillment of these terms and conditions impracticable. In the event of the occurrence of any of the foregoing, at the option of Seller, Seller shall be excused from the performance under these Terms and Conditions, or the performance of the Seller shall be correspondingly extended.

This document sets forth the terms and conditions pursuant to which the purchaser ("Purchaser") will purchase and Equipment Development Co. Inc. ("Seller") will sell the products, accessories, attachments (collectively the Products ") ordered by the Purchaser. These terms and conditions shall govern and apply to the sale of Seller's Products to Purchaser, regardless of any terms and conditions appearing on any purchase order or other forms submitted by Purchaser to Seller, or the inconsistency of any terms therein and herein.

1. PRICE

All prices set forth on any purchase order or other document are F.O.B. Sellers facility or distribution point, as may be determined by Seller (F.O.B. Point). All prices are exclusive of any and all taxes, including, but not limited to, excise, sales, use, property or transportation taxes related to the sale or use of the Products, now or hereafter imposed, together with all penalties and expenses. Purchaser shall be responsible for collecting and/or paying any and all such taxes, whether or not they are stated in any invoice for the Products. Unless otherwise specified herein, all prices are exclusive of inland transportation, freight, insurance and other costs and expenses relating to the shipment of the Products from the F.O.B. point to Purchaser's facility. Any prepayment by Seller of freight insurance and other costs shall be for the account of Purchaser and shall be repaid to Seller.

2. PAYMENT TERMS

Payment terms are as follows. 2% 10 days (to approved and qualified accounts). Net 30 days. This is a cash discount for invoices paid within 10 days after the invoice date, regardless of date of receipt of shipment. This is not a trade discount and will not be granted to accounts that do not adhere to stated terms.

*All past due accounts are subject to a late payment fee of 1.5% per month or a maximum allowed by law if different, along with the expenses incidental to collection including reasonable attorney's fees and costs.

*Seller reserves the right to hold shipments against past due accounts.

*Seller reserves the right to alter payment terms.

3. FREIGHT TERMS

All shipments will be made F.O.B. shipping point as designated in these Terms and Conditions, and title shall pass at the F.O.B. point. Delivery to the initial common carrier shall constitute delivery to the Purchaser. Any claims for loss or damage during shipment are to be filed with carrier by the Purchaser. Seller will not assume responsibility for the performance of the carrier.

Back orders will be shipped in the most practical fashion with charges consistent with our freight policy established with the original order. UPS, FED EX, MAIL or shipments by other couriers are subject to the same terms and conditions as outlined in paragraph #3 "Freight Terms".

4. DELIVERY, DAMAGES, SHORTAGES

Seller shall use reasonable efforts to attempt to cause the Products to be delivered as provided for in these Terms & Conditions. Delivery to the initial common carrier shall constitute the delivery to the Purchaser. Seller's responsibility, in so far as transportation risks are concerned ceases upon the delivery of the Products in good condition to such carrier at the F.O.B. point and all the Products shall be shipped at the Purchaser's risk. Seller shall not be responsible or liable for any loss of income and/or profits, or incidental, special, consequential damages resulting from Seller's delayed performance in shipment and delivery.

5. RETURN OF DEFECTIVE PRODUCTS

Defective or failed material shall be held at the Purchaser's premises until authorization has been granted by Seller to return or dispose of Products. Products that are to be returned for final inspection must be returned Freight Prepaid in the most economical way. Credit will be issued for material found to be defective upon Seller's inspection based on prices at time of purchase.

6. PRODUCTS ORDERED IN ERROR

Products may be returned, provided that claim is made and Seller is notified within 7 days of receipt of Products, and the Products are in original buyer's possession not more than 30 days prior to return, subject to Seller's approval. If Products are accepted for return, they must be Freight Prepaid and buyer will be charged a minimum of 15% restocking charge, plus a charge back for outbound freight charges if the original order was shipped prepaid. Returns are not accepted for any Products that are specifically manufactured to meet the buyer's requirement of either specifications or quantity.

AGREEMENTS

These Terms and Conditions constitute the entire agreement between Seller and Purchaser as it relates to terms and conditions of sale, and supersedes any and all prior oral or written agreements, correspondence, quotations or understandings heretofore in force between the parties relating to the subject matter hereof. There are no agreements between Seller and Purchaser with respect to the Product herein except those specifically set forth in and made part of these terms and conditions. Any additional terms, conditions and/or prices are rejected by Seller.

These terms and conditions may be modified, cancelled or rescinded only by a written agreement of both parties executed by their duly authorized agents.

USE ONLY GENUINE EDCO PARTS & ACCESSORIES

For your own safety, the safety of others and the life of your machine.

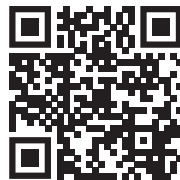
SUBMIT ALL WARRANTY CLAIMS AT:

edcoinc.com/warranty-request-claim/



BEFORE USING THIS PRODUCT

Have You Used EDCO's Online Customer Support??



Scan This QRC or Visit
www.edcoinc.com/customer-support



READ: **EDCO Owner's Manuals and Parts Listings** share basic information and parts of each product. Download and print them whenever needed.



WATCH: **EDCO Product Training Videos** show how to use products, install tooling, and perform basic maintenance.



Example Only

FIND: Somewhere on this product is an **EDCO QRC Training Decal**. Scanning this code provides owner's information, videos, and other training content anywhere/anytime on your mobile device.



CONCRETE KNOWLEDGE

JOIN: **EDCOed.com** is a free, 24-hour training space. Each certification track focuses on a specific EDCO product group. The information in these tracks help businesses be successful with those products.

EDCO is always updating online training / information so you always have the most recent content.

Also see Operator's Safety & Limited Warranty Manual

Equipment Development Co., Inc. • 800.638.3326 • techsupport@edcoinc.com